

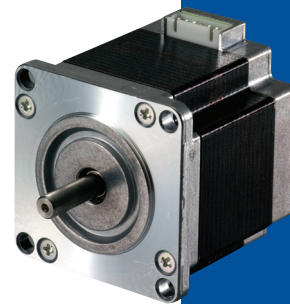
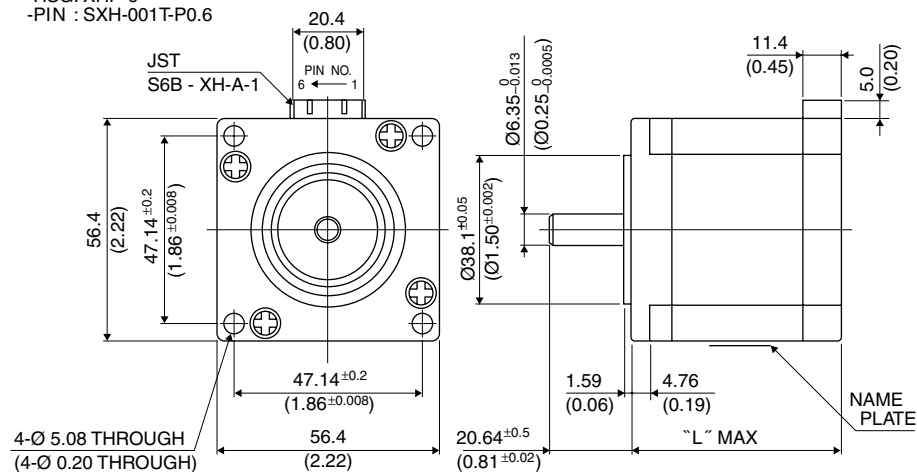
56 □ 0.9°

23KY-K

0.9°

■ 外観図 Outline

- LEAD WIRE SIDE
- HSG: XHP-6
- PIN : SXH-001T-P0.6



Hybrid

*シャフト径 $\text{Ø}8\text{-}\text{Ø}0.013\text{ mm}$ も対応可能です。 *Shaft diameter of $\text{Ø}8\text{-}\text{Ø}0.013\text{ mm}$ is also available.

UNIT: $\frac{\text{mm}}{\text{(inch)}}$

	"L"
23KY-K2**	42 (1.65)
23KY-K0**	54 (2.13)
23KY-K7**	76 (2.99)

結線表 PIN NO. vs. PHASE

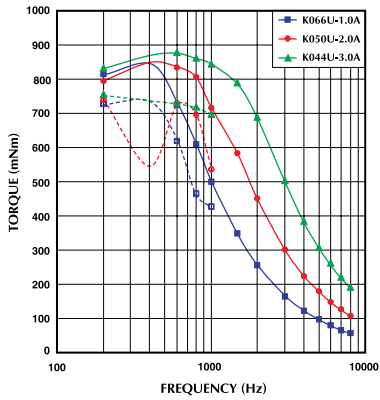
相 (PHASE)	A	A COM	\bar{A}	B	B COM	\bar{B}
ピン番号 (PIN NO.)	1	2	3	4	5	6

■ 仕様 Specifications

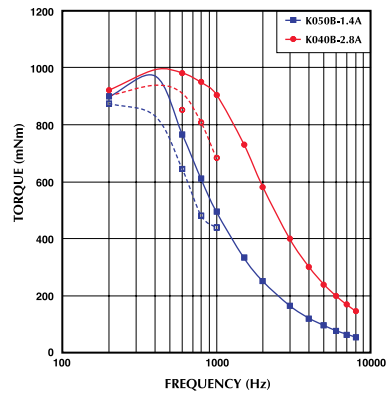
型式	ステップ角	ドライブ方式	定格電流	巻線抵抗	ホールディングトルク	インダクタンス	ロータイナーシャ	デイトントルク	質量
Model	Step Angle	Drive Sequence	Rated Current	Resistance	Holding Torque	Inductance	Rotor Inertia	Detent Torque	Mass
	(deg)		(A)	(Ohms)	(mNm)	(mH)	(g·cm ²)	(mNm)	(g)
23KY-K066U	0.9	UNI-POLAR	1.0	7.00	890	19.0	300	43	680
23KY-K050U	0.9	UNI-POLAR	2.0	1.80	890	5.6	200	43	680
23KY-K044U	0.9	UNI-POLAR	3.0	0.90	890	2.4	300	43	680
23KY-K267U	0.9	UNI-POLAR	1.0	6.30	470	10.0	120	22	470
23KY-K251U	0.9	UNI-POLAR	1.8	1.60	470	3.2	120	22	470
23KY-K244U	0.9	UNI-POLAR	3.0	0.70	470	1.1	120	22	470
23KY-K762U	0.9	UNI-POLAR	1.0	8.60	1250	23.0	360	50	1050
23KY-K748U	0.9	UNI-POLAR	2.0	2.30	1250	6.5	360	50	1050
23KY-K743U	0.9	UNI-POLAR	3.0	1.10	1250	2.9	360	50	1050
23KY-K050B	0.9	BI-POLAR	1.4	3.60	1050	20.0	300	43	680
23KY-K040B	0.9	BI-POLAR	2.8	0.90	1050	3.8	300	43	680
23KY-K251B	0.9	BI-POLAR	1.4	3.00	580	11.0	120	22	470
23KY-K241B	0.9	BI-POLAR	2.8	0.80	580	2.4	120	22	470
23KY-K748B	0.9	BI-POLAR	1.4	4.50	1580	24.0	480	50	1050
23KY-K740B	0.9	BI-POLAR	2.8	1.35	1580	5.7	480	50	1050

■ トルク・スピード特性 Torque/Speed Characteristics

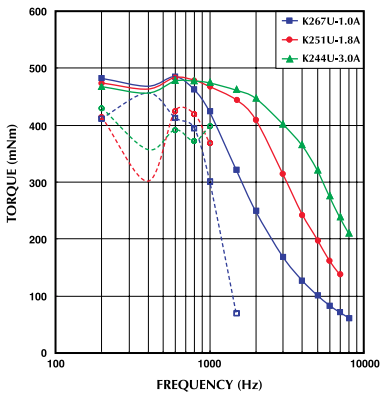
Model No: 23KY-K0xxU
Driver: Chopper Dual
Supply Voltage: 24.0 (Volt)



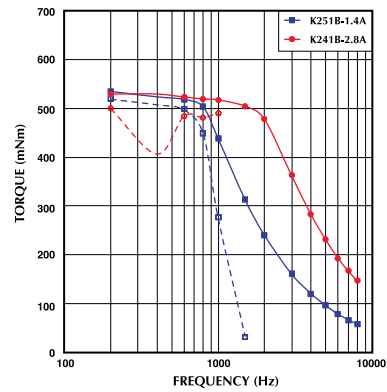
Model No: 23KY-K0xxB
Driver: Chopper Dual
Supply Voltage: 24.0 (Volt)



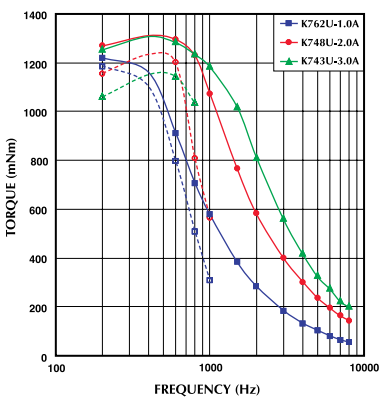
Model No: 23KY-K2xxU
Driver: Chopper Dual
Supply Voltage: 24.0 (Volt)



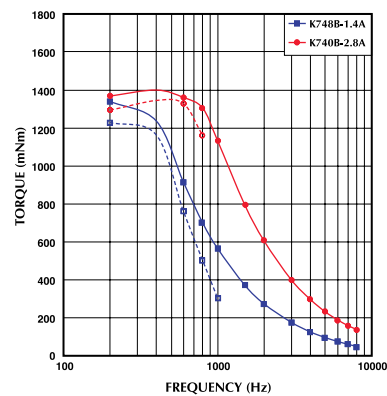
Model No: 23KY-K2xxB
Driver: Chopper Dual
Supply Voltage: 24.0 (Volt)



Model No: 23KY-K7xxU
Driver: Chopper Dual
Supply Voltage: 24.0 (Volt)



Model No: 23KY-K7xxB
Driver: Chopper Dual
Supply Voltage: 24.0 (Volt)



— : PULL OUT
- - - : PULL IN